

# Homeowner Kit Assembly Instructions



For the following models:

- **Prestige**
- **Stafford**
- **Richmond**
- **Lansing**
- **Fairmont**
- **Windsor**
- **Hanover**
- **Salem**



*Congratulations on your new surround purchase! Now that the blood is pumping from unpacking the surround, you are ready to put it together. Good luck!*

## Parts Included in Kit

Included in the homeowner kit is the following:

- 1 shelf
- 1 faceplate
- 2 columns
- 2 wraps for bottom of columns
- 1 mounting board
- 1 hardware pack

The hardware pack contains the following (extras are included for each item):

- 20– 1¼" finish nails
- 15– 1¼" screws
- 7– 2" screws (Phillips drive head)
- 5– 2" finish screws ("T-10" star drive head)
- 5– 3" screws
- 3– 5" screws
- 1– "T-10" Star drive bit

## Tools and Supplies Needed

To assemble the surround, you will need the following:

- A hammer
- A drill with a phillips bit
- 3/16" drill bit
- Wood glue
- A saw to cut the columns (if needed)

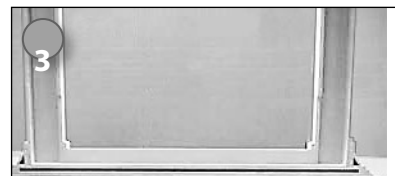
**1** Determine the desired height of the columns.

**NOTE:** The standard height of the columns may suit your needs perfectly, but you may desire to make them shorter. This would depend on several factors: amount of exposed tile wanted around the firebox, amount of room available, personal tastes, etc.

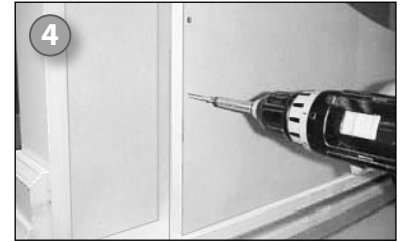
**NOTE:** If the columns are cut shorter, be sure to cut equal amounts off of both ends. This will maintain an equal distance from the end of the flutes to the end of the column. For the Prestige surround, a max amount of 4" can be cut from both ends of the column, for a total of 8". For the Stafford surround, a max amount of 5¾" can be cut from both ends of the column, for a total of 11½".

**2** Take the shelf and place it upside down on a padded surface.

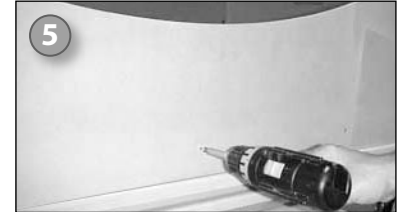
**3** Place each column on the shelf with the notch in the column facing towards the inside.



**4** Place the faceplate between the columns. Align the holes in the faceplate with the holes in the edge of the columns to ensure proper fit. Remove the faceplate and run a bead of glue on the sides and top of the faceplate. Replace the faceplate and attach it to the columns using the pre-drilled holes and the 2" screws (Phillips drive head, not the 2" finish screws with star drive head).



**5** Using the 1 1/4" screws, attach the faceplate to the shelf using the pre-drilled holes.



**6** Spread glue on the inside area of the shelf where the columns will be fastened. Using the 1 1/4" screws, attach the columns to the shelf using the pre-drilled holes.



**7** Carefully, turn the surround over to an upright position. Place the surround centered over the firebox. Draw a pencil line on the wall along the top edge of the shelf.



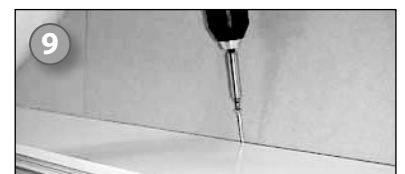
**8** Remove the surround. Locate the studs in the wall. Place the mounting board 3/4" below the pencil line made in step 7 and centered over the firebox. Pre-drill the mounting board for screws using a 3/16" drill bit, and attach it to the studs with glue and the 3" screws.



**9** Spread glue on the mounting board and replace the surround centered over the firebox. The mounting board fits into the notch in the shelf. Using the 2" finish screws and the pre-drilled holes in the top of the shelf, secure the surround to the mounting board. Use the "T-10" star drive bit provided to secure the 2" finish screws with star drive head).



**10** Using the 5" screws and the pre-drilled holes, secure the bottom of each column to the wall.



**NOTE:** The wraps for the bottom of the columns will cover these screws.

**11** Locate the two wraps for the bottom of the columns. Use glue and the 1 1/4" finish nails to attach the wraps to the bottom of the columns.



**12** Prep the surround for paint or finish by putting any visible nail or screw holes. Caulk as needed between the wall and surround. Also, check all the joints in the surround itself and caulk as needed. Sand as needed (which is usually not much). **YOU ARE DONE!**



**NOTE:** If painting the surround, it is generally best to prime it prior to painting.